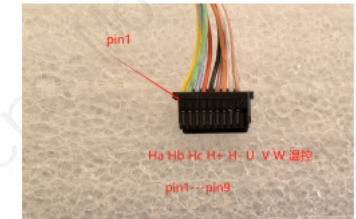
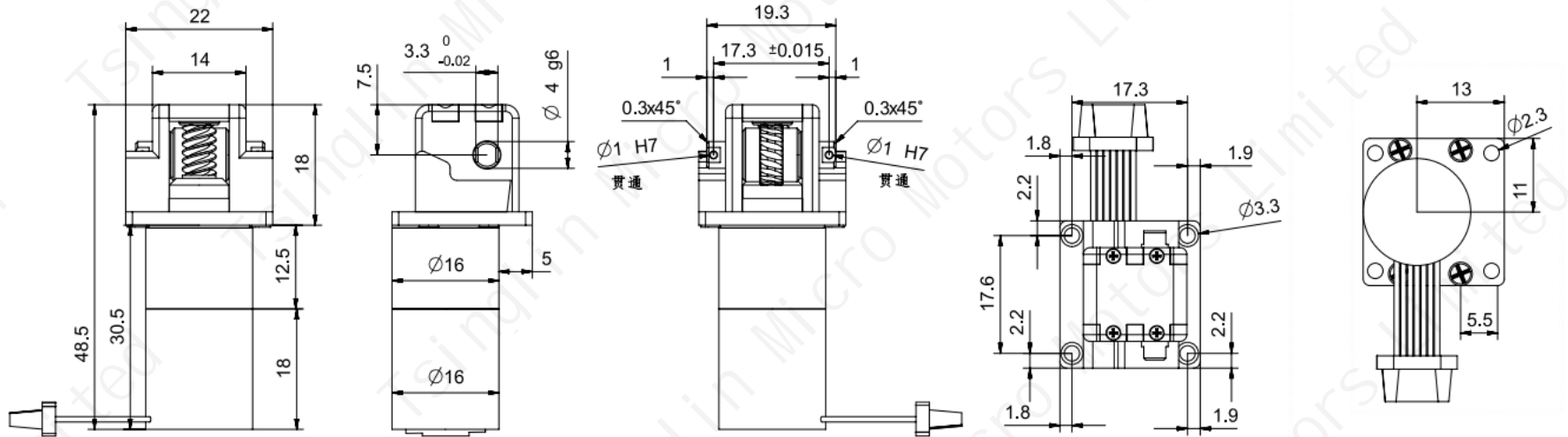


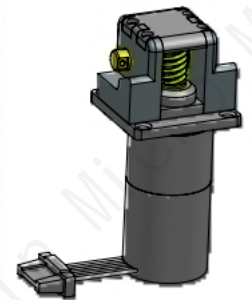
Worm and Worm Gear Parameter		
	Worm	Worm Gear
Module	0.4	
Number of Starts/Teeth	3	20
Pressure Angle	20°	20°
Addendum Circle Diameter	5	8.8
Pitch Circle Diameter	4.2	8
Lead Angle	Right-hand 5.95°	
Addendum Coefficient	1	1
Clearance Coefficient	0.25	0.25
Modification Coefficient	-	-
Material	20crmnti	SUS416
Accuracy Grade	GB/T 10095-2001, Grade 8	



Terminal Model:KW30-10P-1C(800)

Wiring Sequence:1-9

pin1-HALLA
pin2-HALLB
pin3-HALLZ
pin4-3.3V
pin5-GND
pin6-motor U
pin7-motor V
pin8-motor W
pin9-Temp.Ctrl.



Motor Performance Specifications:

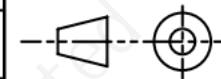
- 1.Motor Type:Coreless Brushless Motor
- 2.Operating Voltage:12V
- 3.No-load Speed:32000±10%RPM
- 4.No-load Current:≤0.5A
- 5.Load Speed:28000±10%RPM
- 6.Load Torque:≥3mNm
- 7.Load Current:≤2A
- 8.Number Of Pole Pairs:2 pole pairs
- 9.Operating Temperature:-40 to 85°C
- 10.Noise Level:≤45DB
- 11.Maximum Motor Efficiency:75%

Reducer Motor Performance Specifications:

- 1.Operating Voltage:12V
- 2.No-load Speed:35±10%RPM
- 3.No-load Current:≤0.5A
- 4.Load Speed:30±10%RPM
- 5.Load Torque:≥1Nm
- 6.Load Current:≤2A
- 7.Operating Temperature:-40 to 85°C
- 8.Gear Reduction Ratio:1:853 (Planetary:1:128,Worm Gear:1:6.67)
- 9.Noise Level:≤55DB
- 10.Gearbox Backlash: ≤1.5 degree
- 11.Gearbox Material:Pure Copper (Machined)

版本	变更日期	变更内容
A 1	2025.03.22	Change the worm gear and output shaft to an integrated design
设计		
审核		
批准		
日期	2025.04.30	

第一视觉画法



未注线性与角度尺寸公差:

GB\T1804-m eqv
ISO 2768-l:m

16mm Planetary Gearbox+16mm
Coreless Brushless Motor+worm gear
reverse output (Product Type)

TSL-PG16K128-KW1618+
LG04M20Z (Thumb Grasp Motor Module) (Product Model)

Tsinglin Micro Motors Limited