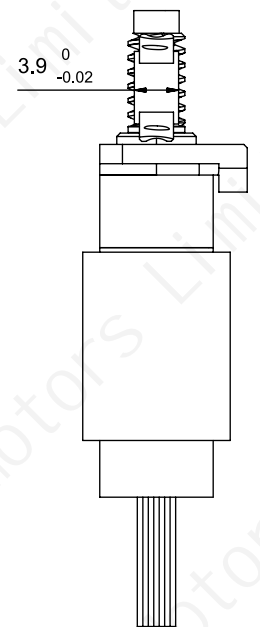
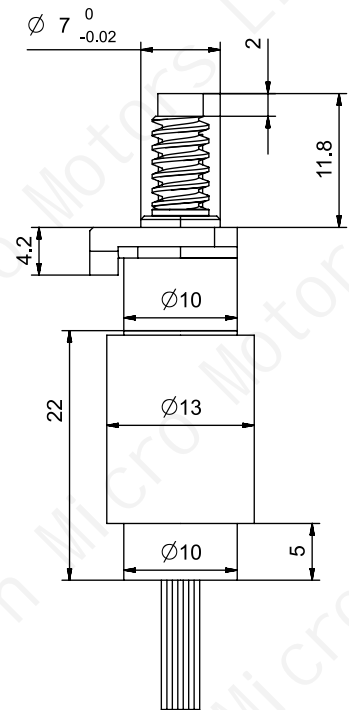
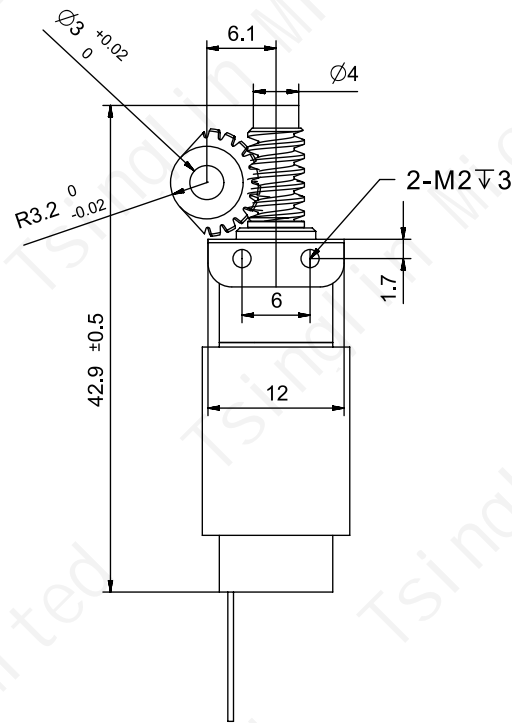


Worm and Worm Gear Parameter Table

	Worm	Worm Gear
Module	0.4	
Pressure Angle	1	20
Tip Diameter	20°	20°
Reference Diameter	5	8.8
Lead Angle	4.2	8
Worm Lead	Right-hand 5.44°	
Worm Pitch	1.257	-
Addendum Coefficient	1	1
Clearance Coefficient	0.25	0.25
Modification Coefficient	-	-
Transmission Center Distance	6.1	
Material	SUS416	20crmnti
Accuracy Class	GB/T 10095-2001-8级	



Motor Performance Parameters:

- Motor Type: Coreless Brushless Motor
- Operating Voltage: 12V
- No-load Speed: 25000±10%RPM
- No-load Current: ≤0.4A
- Load Speed: 18000±10%RPM
- Load Torque: ≥15g.cm
- Load Current: ≤1A
- Stall Torque: ≥100g.cm
- Pole Pairs: 2 Pole Pairs
- Operating Temperature: -40-85°C
- Weight: ≤30g
- Noise: ≤45DB
- Motor Maximum Efficiency: 75%

Gearmotor Performance Parameters:

- Operating Voltage: 12V
- No-load Speed: 45±10%RPM
- No-load Current: ≤0.5A
- Rated Speed: 30±10%RPM
- Rated Torque: ≥2500g.cm
- Rated Current: ≤1.2A
- Operating Temperature: -40-80°C
- Reduction Ratio: 1:560
(Planetary Stage 1: 28, Worm and Worm Gear Stage 1: 20)
- Noise: ≤55DB
- Gearbox Material: Pure Steel
(Machined)

Coreless Brushless Motor

- Wiring Sequence: PIN1-3
pin1 - U
pin2 - V
pin3 - W

设计		第一视觉画法 	10mm Planetary Gearbox + 13mm Coreless Brushless Motor+Worm Gear Reducer + Drive (Product Type)
审核			TSL-PG10K28-KW1317+LG04M20Z (Module) (Product Model)
批准		未注线性与角度尺寸公差: GB/T 1804-m eqv ISO 2768-1:m	Tsinglin Micro Motors Limited
日期	2025.11.22		