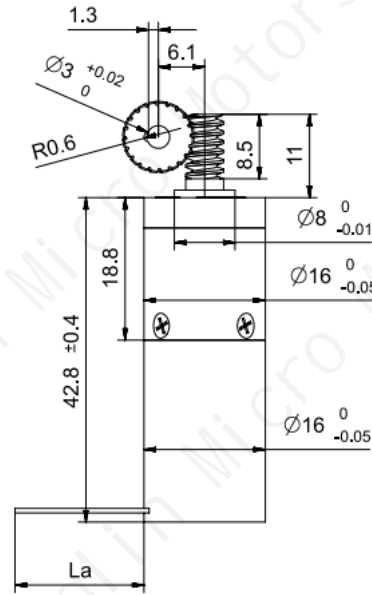
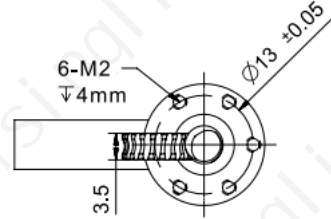
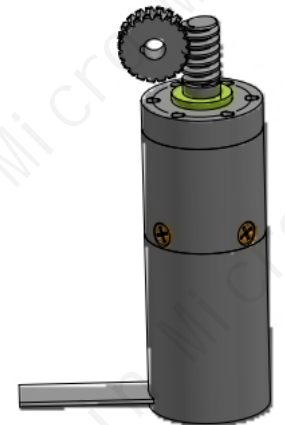


Worm and Worm Gear Parameter		
	Worm	Worm Gear
Module	0.4	
Number of Starts/Teeth	1	20
Pressure Angle	20°	20°
Addendum Circle Diameter	5	8.8
Pitch Circle Diameter	4.2	8
Lead Angle	右旋 5.44°	
worm lead	1.257	-
worm pitch	1.257	-
Addendum Coefficient	1	1
Clearance Coefficient	0.25	0.25
Modification Coefficient	-	-
center distance	6.1	
Material	20crmnti	SUS416
Accuracy Grade	GB/T 10095-2001-8级	



FPC Cable Length (La): 90 mm

Pin Number Definition  
 pin1-Ha  
 pin2-Hb  
 pin3-Hc  
 pin4-3.3V  
 pin5-GND  
 pin6+7-U  
 pin8+9-V  
 pin10+11-W  
 pin12-Thermistor



Motor Performance Parameters
1.Motor Type: Coreless brushless motor
2.Operating Voltage: 12 V
3.No-load Speed: 35000 ± 10% RPM
4.No-load Current: ≤ 0.4 A
5.Rated Speed: 18000 ± 10% RPM
6.Rated Torque: ≥ 70 g·cm
7.Rated Current: ≤ 2 A
8.Stall Torque: ≥ 200 g·cm
9.Stall Current: ≤ 6 A
10.Pole Pairs: 1 pair
11.Operating Temperature: -40 - 80 °C
12.Noise: ≤ 45 dB
13.Maximum Motor Efficiency: 75%

Gear Motor Performance Parameters
1.Operating Voltage: 12 V
2.No-load Speed: 60 ± 10% RPM
3.No-load Current: ≤ 0.4 A
4.Rated Speed: 30 ± 10% RPM
5.Rated Torque: ≥ 2 N·m
6.Rated Current: ≤ 2 A
7.Stall Torque: ≥ 5 N·m
8.Operating Temperature: -40 - 80 °C
9.Reduction Ratio: 1:580 (Planetary: 1:29; Worm Gear: 1:20)
10.Noise: ≤ 55 dB
11.Gearbox Material: Pure copper (machined)

版本	变更日期	变更内容
A 1	2025.04.10	Changed worm shaft and output shaft to be integrated
A 2	2025.04.11	Changed overall machine length and worm shaft length
设计		
审核		
批准		
日期	2025.04.10	



16mm Planetary Gearbox + 16mm Coreless Brushless Motor + Worm Gear Output (Product Type)  
 PG16K29-KW1624+LG04K20 (Product Model)  
 Tsinglin Micro Motors Limited